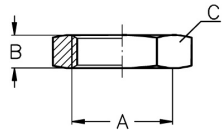
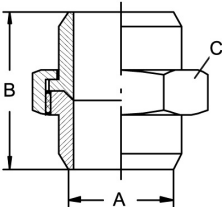
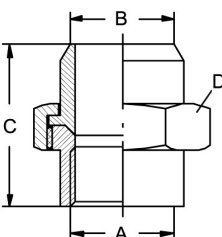


Threaded fittings DIN EN 10241
Art.No
EUR
Art.No
EUR
Nut hexagonal, G


DN	A	B	C	AISI316Ti	
6	G 1/8"	6	SW 19	542228	5,60
8	G 1/4"	6	SW 22	542229	6,70
10	G 3/8"	7	SW 27	542230	7,30
15	G 1/2"	8	SW 32	542231	7,60
20	G 3/4"	9	SW 36	542232	9,30
25	G 1"	10	SW 46	542233	14,20
32	G 1,25"	11	SW 55	542234	18,60
40	G 1,5"	12	SW 60	542235	24,10
50	G 2"	13	SW 75	542236	44,90
65	G 2,5"	16	SW 95	542237	76,40
80	G 3"	19	SW 105	542238	93,10
100	G 4"	21	SW 135	542239	125,80

Similar to DIN EN 10241
Union conical, SS


DN	A	B	C	AISI316C-1.4408	
6	10,2	37	SW 30	543328	33,80
8	13,2	37	SW 30	543329	39,50
10	17,2	40	SW 36	543330	30,60
15	21,3	46	SW 41	543331	33,40
20	26,9	48	SW 46	543332	44,70
25	33,7	52	SW 50	543333	58,40
32	42,4	60	SW 65	543334	82,80
40	48,3	71	SW 75	543335	100,60
50	60,3	76	SW 90	543336	135,30
65	76,1	90	SW 110	543337	355,70
80	88,9	90	SW 120	543338	474,50
100	114,3	115	SW 155	543339	820,70

Similar to DIN EN 10241
Union conical, RpS


DN	A	B	C	D	AISI316C-1.4408	
6	Rp 1/8"	10,2	37	SW 30	543428	Enquiry
8	Rp 1/4"	13,2	37	SW 30	543429	58,60
10	Rp 3/8"	17,2	40	SW 36	543430	58,60
15	Rp 1/2"	21,3	46	SW 41	543431	67,10
20	Rp 3/4"	26,9	48	SW 46	543432	87,90
25	Rp 1"	33,7	52	SW 50	543433	116,50
32	Rp 1,25"	42,4	60	SW 65	543434	166,60
40	Rp 1,5"	48,3	71	SW 75	543435	202,40
50	Rp 2"	60,3	76	SW 90	543436	269,80
65	Rp 2,5"	76,1	90	SW 110	543437	712,60
80	Rp 3"	88,9	90	SW 120	543438	918,70

Similar to DIN EN 10241